

Wrap Party

by Fran Casselman

The setting:

- #12390 Basic Modular Room Box Kit
- #42305 Whitewashed Plank Wallpaper

The furnishings:

- #95225 Unfinished Storage Table
- #10593 Tall White Stool
- #5009 Three-Unit Bookcase
- #42220 White Beadboard Specialty Paper
- #74414 Set of Four Oak Chairs
- #95150 Red Rolling Craft Cart
- #50940 Unfinished Demilune Table

Décor and accessories:

- #5986 17' Pine Roping
- #9735 5-Pc. Squeeze-Me Trees Set
- #9963 12-Pc. Colorful Feve Nativity Set
- #78232 Box of Christmas Decorations
- #42430 Kraft Storage Box Kit
- #10108 Two Douglas Fir Trees
- #77584 Rustic Wash Pot
- #38016 Christmas Cut-Out Cookies
- #71610 Tiny Working Scissors
- #21805 Tape Dispenser
- #11990 Gift Wrapping Kit
- #6999 Old World Christmas Boxes Kit
- #6998 Victorian Christmas Boxes Kit
- #56015 Three Empty Boxes
- #47811 Wrapped Single Gift
- #22875 Stormy (cat)
- #34024 Pair of White Baskets

Gift bags, Christmas cards and wall banner are free printies.

Other items:

- #55309 Traditions® White Gesso
- #9154 Sheet Wood 4-Inch Width
- #7012 Newel Posts
- #9205 Strip Wood 3/8-Inch Width
- #81528 Brown Age-It EASY
- #4200 1/4 x 24 Cove Moulding

Building the box

The room box kit has partially-cut openings for a door and window. If you do not need these for your scene, tape over them on one side of the panels and fill the grooves with drywall compound, wood filler or similar. Most of these materials shrink somewhat as they dry so allow to dry thoroughly and apply additional layers as needed (project required three layers). Sand smooth; remove tape and make sure the taped side is also well filled. Sand as necessary.



Assemble the room box according to directions. Do not apply the exterior trim now, even if you plan to use it later. When the glue is completely dry, prime the entire box, inside and out with Gesso (#55309) or other quality primer. Apply additional coats if needed; sand lightly when dry.

Finish the interior with your choice of paint/wallpaper or other materials.

If you plan to gift-wrap the box (or add any other type of exterior finish), do that next, before adding furniture and accessories.

Add furnishings and décor to complete the scene and enjoy!

Crafting tips

The shelf extension/table is made from a 3" x 6" piece of #9154 Sheet Wood (or similar size of other thin wood) with two newel posts (#7012) for legs and lengths of 3/8" x 1/8" strip wood (such as #9205) for the apron. It is the same height as the surface of the shelf unit, and the top was finished to match. The back edge rests on a scrap of #4200 Cove Moulding glued to the shelf unit. (The table is removable; finished similar to the tall stool, detailed below.)

The tall white stool was sanded to remove the paint from the seat and to suggest wear on the lower rungs. Additional sanding slightly roughened the remaining white paint surface before repainting with Antique White. The seat and wear areas were stained with #81528 Brown Age-it EASY.

To add "snow" to the tiny Squeeze Me trees (barely visible on top left shelf), dip a fingertip into a small puddle of white paint and

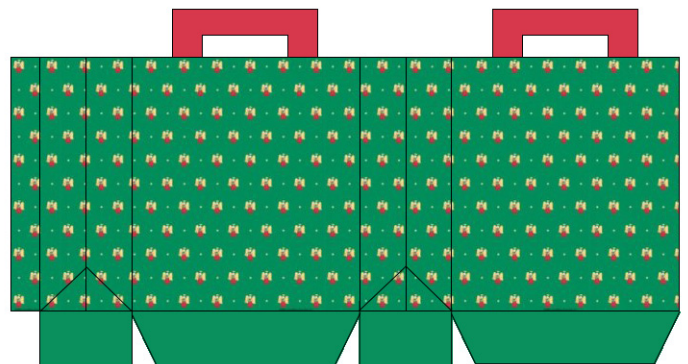
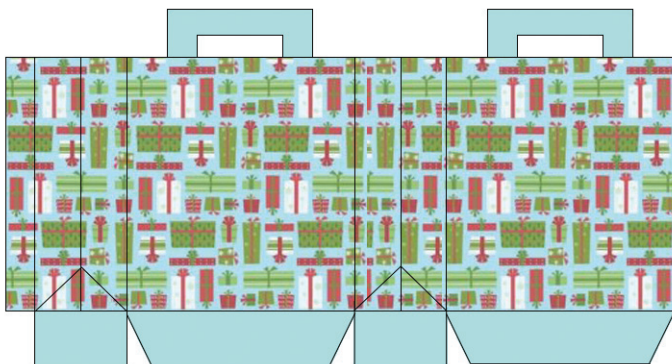
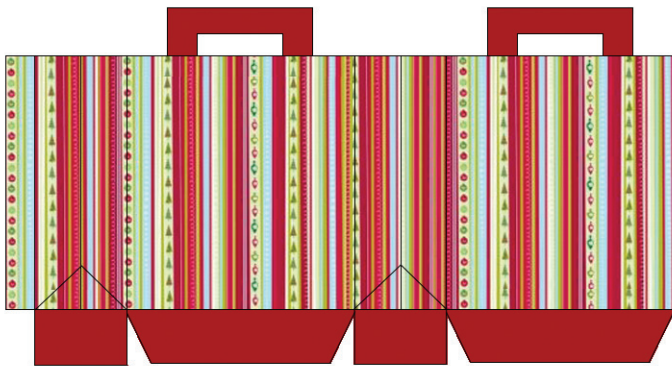
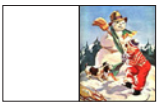
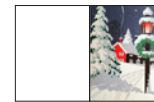
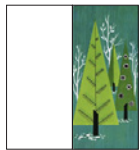
lightly go over the surface of the tree. (This method also works for almost any rough surface that needs "snow" or other highlighting.)

The baskets from #95225 were stained with #80873 Grey Age-it EASY; the top rims were painted red. One holds snips of seasonal greenery on the bottom left shelf, the other holds holiday cards on the second right shelf.

Fine knotting cord was used for the bows on the shelf garland and the handles of the shopping bags, but embroidery floss or any other thin cord would work as well.

The wrapping paper rolls and ribbon reels were made from paper straws. Use a sharp craft knife to cut 3" lengths for paper rolls and 1/4"-1/2" lengths for reels. Use punched-cardstock circles (5/16"-3/8") for the reel ends. Slit scraps of gift ribbon into thin widths and glue to reels.

The shopping bag printies were modified slightly as follows. Print the page at 100% size for the smaller bags and at 150% for the larger ones. Mark dots to indicate the handle placement and cut off the printed paper handles. Either before or after assembly, glue on 1" lengths of fine cord for the small bag handles and 1 1/2" lengths for the larger ones. Tuck in scraps of tissue paper.



Glitter Ball Christmas Tree

by Fran Casselman

Items used:

- #10108 Douglas Fir Tree (two in package)
- #77584 Rustic Wash Pot
- #11991 Golden Sparkle Cord
- #1249 Weldbond or similar white glue (A detail applicator is very helpful, or use a toothpick)

Small foam balls (vase filler from Dollar Tree)

Ultra-fine glitter in your choice of colors

Hot glue

Water-based clear sealer (thinner is better)

Hair spray (optional)

Tweezers

Long, ball-head pins (such as corsage pins)

Small containers for the sealer and glitter (something like the caps from old glue sticks is ideal, but whatever you have is fine)

Other items in the scene were crafted and/or purchased from craft stores and other retailers.

Note: Due to the way they are made, the #10108 trees shed quite a bit of their flocking. If you open their package carefully, you can collect the foliage and re-apply it to any bare spots as you near the end of your project. Also, if you work over a plain sheet of paper that has been folded and opened out, it is easy to preserve what falls as you work.

Before you begin decorating, you may want to try using hair spray to reduce the shedding.

Plant the tree

Add some weight to the Rustic Wash Pot (pebbles or BBs glued inside around the bottom; keep the center clear). When that glue is dry, cut the tree trunk to the desired height and use hot glue to secure it into the pot.

Make the decorations

Balls: I had some already-glittered tiny foam balls from a disassembled full-size ornament, but there weren't any in gold so I had to make them. Here's what I did, so you can make your own in any color.

Prepare a small container for the sealer, as well as for each color of glitter and a "drying" dish. Stick a pin into a foam ball and dip the ball into the sealer. Shake off any drips, and dip it into the glitter. Tap off the excess and use tweezers or another pin to push the ball off and into the drying dish. Repeat. Let dry before use. (You can also leave it on the pin to dry if you have enough pins.)



Garland: Cut a short length (2" or so) of the Golden Sparkle Cord and unravel it into many glittery threads.

Decorate the tree

First, glue foliage to any bare spots on the tree. This is the last chance to do this easily. When that is set, apply glue to a branch tip and use tweezers to add a glittery thread. Choose the next appropriate branch tip and glue the other end, then add a new thread. Shorten the threads as needed where the tips are closer together. Don't rush. This takes time and patience.

When the glue has set, add the balls. Use your fingers or a pin to hold them (tweezers can leave dents) and apply a bit of glue to the top. Stick the ball to the underside of a branch tip so that it looks as if it is hanging.

The star topper is from #72015 Christmas Tree Ornament Set. I also added a few lightweight plastic beads here and there.